

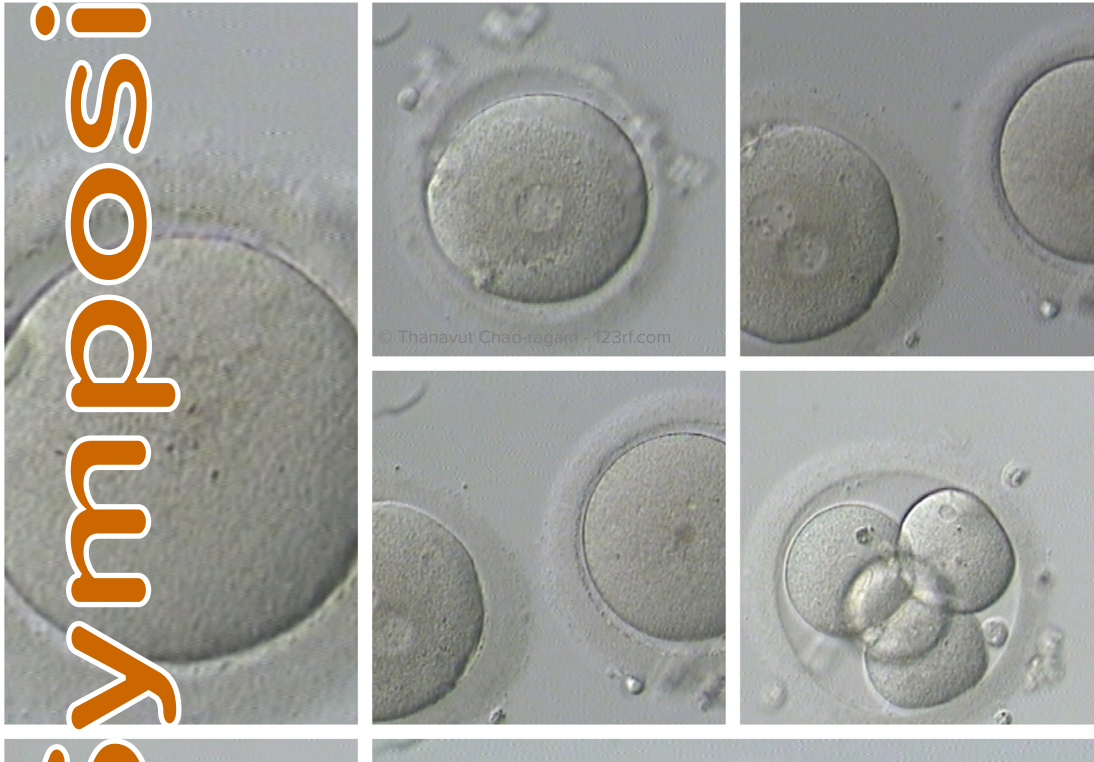


The Federal Commission for
medical and scientific research
on embryos in vitro

29 NOVEMBER 2019

Recent developments in human embryo research

Symposium



Maison des Parlementaires,
Rue de Louvain 21,
1000 Bruxelles



Programme

Symposium Chair:

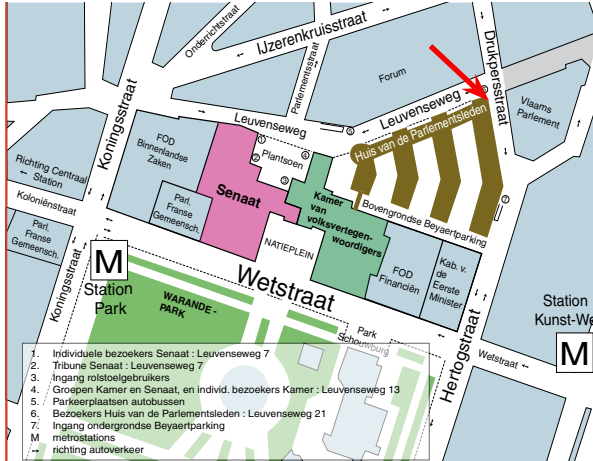
Guido Pennings, President of the CFE
Charles Susanne, CFE Vice-President

- 11.00 **Registration + sandwich mea**
- 12.00 **Introduction to the symposium**
by Isabelle Van Der Brempt, Head of the Acute and Chronic Care Department, DG Health Care, FPS of Health, Food Chain Safety and Environment
- 12.15 **What is an embryo and what is scientific research according to the Federal Embryo Commission?**
Sophie DEBROCK, Leuven Universitair Fertiliteitscentrum, KU Leuven
- 13.00 **Embryonic stem cells: an essential tool for human biology and medicine tomorrow.**
Pierre VANDERHAEGHEN, Université Libre de Bruxelles
- 13.45 **Synthetic Human Entities with Embryo-like Features (SHEEFs) : an ethical exploration**
Guido DE WERT, Universiteit van Maastricht, Nederland
- 14.30 **Coffee break**
- 15.00 **Patenting CRISPR-Cas9: the legal battle**
Julian COCKBAIN, Bioethics Institute Ghent, Universiteit Gent
- 15.45 **Policy framework of the biobanks in Belgium**
Nick VAN GELDER, jurist FAGG
- 16.30 **European regulation of embryo research**
Geoffrey WILLEMS, Centre de droit de la personne, de la famille et de son patrimoine, UCL.
- 17.15 **Conclusions and take home messages**
by Charles Susanne
- 17.30 **Reception**

Simultaneous translation: Dutch - French - English, slides in English
Ethics and Economy” accreditation in progress.

Mandatory and free registration until 22/10/2019 via www.cfe-fce.be

Access



House of Parliamentarians, Rue de Louvain 21
1009 Brussels

Public transport:

- Park stop:
metro: lines 1 and 5;
trams: 92 and 94;
bus: 29, 63, 65 and 66
- Arts-Loi stop:
metro: lines 1, 2, 5 and 6;
bus : 22
more info : www.stib.be
- SNCB train station: Brussels Central
More info: www.sncb.be

If you choose to come by car, please note that surface parking spaces are limited and subject to a charge in the area.

You can also use the underground car parks (paying) Loi (rue de la Loi 19) or Industrie (rue de l'Industrie 26-38).

More info: www.interparking.be